

# COMPANY OF FOOLS

A proud part of the Sun Valley Center for the Arts

## Study Guide

### The Miraculous Journey of Edward Tulane



Adapted by Dwayne Hartford  
from the book by Kate DiCamillo

Directed by Natalie Battistone

Generously sponsored by Marcia and Donald Liebich. Student matinees are sponsored by Hailey Rotary Foundation, the Kiwanis Club of Hailey and Wood River Valley Papoose Club

#### 23<sup>rd</sup> SEASON SPONSORS:

Arrow R. Storage, Big Wood Landscape, Linda and Bob Edwards, Ginny and Peter Foreman, Carol and Len Harlig, Dan and Jodie Hunt and the Roy A. Hunt Foundation, Kenneth Lewis, Mathieu, Ranum & Allaire, PLLC, Jane Rosen and Scott Miley—Scott Miley Roofing, Carol P. Nie, Priscilla Pittiglio, The Shubert Foundation, Richard Smooke and Family in loving memory of Judith Smooke, Mary Ann and John Underwood, Maryanne and Jerry Whitcomb, Jeri L. Wolfson in support of The Center's BIG IDEA project *We the People: Protest and Patriotism*, Barbara and Stanley Zax, and Media sponsor *The Weekly Sun*.

# TABLE OF CONTENTS

- 1 WELCOME TO COMPANY OF FOOLS & THE LIBERTY THEATRE**
- 2 ABOUT THE PLAY: THE MIRACULOUS JOURNEY OF EDWARD TULANE and ABOUT THE AUTHOR & PLAYWRIGHT**
- 3 WORDS TO CONSIDER and THE MAKING OF EDWARD TULANE**
- 4 ENGAGING STUDENTS BEFORE & AFTER THE SHOW**
- 5 THE CREATIVE TEAM & CAST**
- 6 IDAHO CONTENT STANDARDS & RESOURCES**

# WELCOME TO COMPANY OF FOOLS

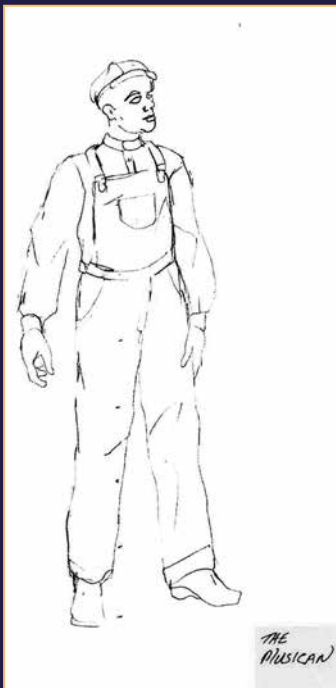
Dear Educator,

Company of Fools and the Sun Valley Center for the Arts are pleased to offer you this study guide to prepare you and your students for our performance of THE MIRACULOUS JOURNEY OF EDWARD TULANE, adapted by Dwayne Hartford from the book by Kate DiCamillo. Working with schools is a fundamental part of The Center's mission.

We hope this study guide will serve as a useful resource for you as educators and parents. It is designed to enhance student learning both before and after the performance, to support your classroom lesson plans and deepen the educational value of your students' experience. The resources and activities in this study guide support the Idaho Content Standards in English Language Arts and Literacy for grades 2–8.

Thank you for the sharing the magic of performing arts with your students!

—Company of Fools



## ABOUT THE PLAY: *The Miraculous Journey of Edward Tulane*

---

Edward Tulane is an expensive toy rabbit made of china, beloved by a girl named Abilene. But he couldn't care less—he's vain and self-centered. When Edward is accidentally thrown overboard on an ocean voyage, he begins a miraculous journey, but he can't move or speak—he's a toy rabbit! He meets an elderly grieving couple who find comfort in Edward's presence, a hobo and his dog, a farmer in need of a scarecrow, a sad little boy and his very ill sister, and finally a doll mender and an old doll who teach him an invaluable lesson—what it is to love, what it is to lose that love, and how to find the courage to love again.

## ABOUT THE AUTHOR & THE PLAYWRIGHT

---



**KATE DiCAMILLO** is an American author who has written numerous award-winning young adult fiction and children's books. She was born in Philadelphia in 1964, but suffered from chronic pneumonia and so moved with her family to Florida. She attended college and majored in English at the University of Florida, where she decided she would like to be a writer. DiCamillo's first book to be recognized with the Newbury Honor was *Because of Winn-Dixie* (2000). Other DiCamillo novels that have won the Newbury Medal include *The Tale of Despereaux* (2003) and *Flora & Ulysses: The Illuminated Adventures* (2013). *The Miraculous Journey of Edward Tulane* was published in 2006 and won the Boston Globe Horn Award for Fiction. In 2014 DiCamillo was named as the national ambassador for young people's literature, a role she held for two years. She refers to herself as a storyteller. Kate writes, "Stories are everywhere. All you have to do is pay attention."



**DWAYNE HARTFORD** is an actor, playwright and director. Hartford is the artistic director and an associate artist at Childsplay in Tempe, Arizona. His plays have been produced professionally around the country and in Canada. *Eric and Elliot* received the distinguished play award in 2005 from the American Alliance of Theatre & Education. *The Imaginators* was produced and aired on KAET TV, the Phoenix PBS affiliate. His adaptation of *A Tale of Two Cities* was part of New York University's New Plays for Young Audiences Workshop and has been performed at Seattle Children's Theatre; People's Light and Theatre in Malvern, Penn.; and Wheelock Family Theatre in Boston. *The Bully Pulpit* is included in the anthology *The Bully Plays* and is being produced in schools and communities around the country. His other published plays include *The Color of Stars* and *The Miraculous Journey of Edward Tulane*. Hartford lives in Phoenix with his dog, Henry. He is originally from Maine and received his bachelor's in fine arts in musical theater from the Boston Conservatory.

# WORDS TO CONSIDER

---

**CHINA** — an item made out of hard, dried clay, also known as porcelain

**DAPPER** — neat, trim in appearance

**GROTESQUE** — odd, unnatural, bizarre

**MIRACULOUS** — wonderful, amazing and much like a miracle

**BOXCAR** — a train car with large sliding doors that is used for transporting cargo

**DELECTABLE** — highly pleasing, very delicious

**CONSTELLATION** — a group of stars given a definitive name

**GAWK** — to stare in an obvious way

**PNEUMONIA** — dangerous inflammation of the lungs

**VOYAGE** — a journey from one place to another

**DAFT** — senseless, foolish

**CONSEQUENCE** — the effect or outcome of an earlier event

**DIGNIFIED** — stately, noble

# THE MAKING OF EDWARD TULANE: An Evolution of Art

---

Edward is actually multiple props made by Company of Fools Creative Team members K.O. Ogilvie and Chris Henderson. The first Edward had a foam body, a clay head, and arms and legs made of wood dowels with doll joints. Even with papier-mâché added, his foam body was not strong enough. Edward is now a combination of things learned from creating the earlier versions; he has a body made from wood, with wooden arms and legs, a head made from a lighter, durable air-dry clay, and faux mohair over wire for his fur ears. The production features multiple Edwards made using this final set of materials.



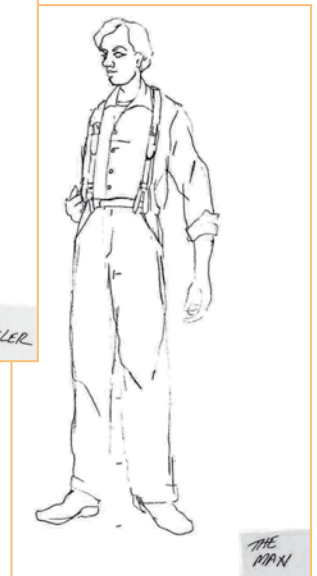


## QUESTIONS TO CONSIDER BEFORE SEEING THE PLAY

- Describe an emotion that you are feeling. How do you express that emotion?
- Do you have a favorite toy, or did you have one when you were younger? If your toy came to life, what kind of personality would it have?
- Describe a journey. What does journey mean to you? Make a hypothesis about what will make Edward's journey miraculous.
- What is the difference between fiction and drama? What does it mean to adapt something?

## QUESTIONS TO CONSIDER AFTER SEEING THE PLAY

- How would you briefly describe this play's story or what this play is about in one sentence?  
 "This is a play about \_\_\_\_\_."
- Imagine that you discover Edward Tulane and that he lives with you and your family for a time. What would his life be like? What do you think he would learn?
- Why do you think Edward's journey is a 'miraculous' one? Can you name another example of a miraculous journey?
- How does Edward help the people that he encounters on his journey?
- The story of Edward's journey takes place over the span of 20 years from the mid-1920s to the mid-1940s in different locations all over America. What important events took place in American History during that time period? How do you know that these events influenced Edward's journey?



## ★ Teacher Tip!

## WAYS TO ENGAGE STUDENTS AFTER SEEING THE PLAY

Using the above questions as potential prompts, here are some ways to encourage further examination of the play-going experience.

### EXPLORE

- Write a scene, short play or story about love
- Create a new character for Edward to meet

### ANALYZE

- Draw or connect to a current event or cultural reference
- Draw a map of all the places on Edward's journey

### INTERACT

- Improvise scenes
- Talk to others in your community about their story

# THE CREATIVE TEAM & CAST



\*Member of Actors' Equity Association, the Union of Professional Actors and Stage Managers in the US #EquityWorks

\*\*Member of United Scenic Artists, I.A.T.S.E. Local 829

Dwayne Hartford's script adaptation features four actors who portray all of the characters in the story.

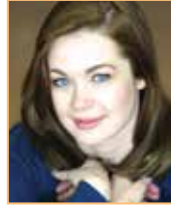
## CAST:



### THE TRAVELER

**(Denise Simone)** Denise Simone has pursued a career in the theatre for the past thirty-eight years in such places as New York, Los Angeles, Virginia and Idaho. It was Simone's move

to Hailey with Company of Fools (of which she is a founding member) that led, thus far, to the richest and most rewarding years of her career. Between 1996–2016, Simone served as COF's Co-Producing Artistic Director and helped to lead the Company in becoming one of the leading arts organizations in the state. Simone's acting roles with COF include Barbara in *August: Osage County*, Veronica in *God of Carnage*, Margie in *Good People*, Polly in *Other Dessert Cities*, the one-woman shows *The Syringa Tree* and *Shirley Valentine*, and May in *Fool for Love* starring Bruce Willis. She recently performed in Boise Contemporary Theatre's productions of *The Roommate* and *The Clean House*. Recently Simone was awarded an Idaho Commission on the Arts fellowship and in 2014 received the Idaho Governor's Award for Excellence in the Arts. *This one—and all the ones to come—are for you friend.*



### THE WOMAN (Aly Wepplo)

Aly Wepplo first appeared onstage with Company of Fools in *The Spitfire Grill*. She is now a proud Company Artist whose work at COF includes *Grey Gardens*; *Enchanted April*;

*Steel Magnolias*; and *Frog and Toad*. Other local credits include *Eurydice* at The Spot, *Seussical* at St. Thomas Playhouse, and the musical duo The Beverly Lovers. Aly is from Virginia, where she played Fiona in *Shrek*, Lucy in *You're a Good Man Charlie Brown*, and the Fairy in *Velveteen Rabbit*. She loves books, including *The Secret Garden* and *Island of the Blue Dolphins*. Her favorite childhood toy was a hippo named Pinky.



### THE MUSICIAN

**(David Janeski)** In his career David has played rabbits in velveteen, but this is his first attempt in the medium of china. He hopes you will use memories of your favorite childhood toy to help bring Edward to life. A core company artist with the Fools, he has been performing

with them since 2009. You may remember him as Tom Wingfield in *The Glass Menagerie*, Little Charles in *August Osage County*, Jim/Tom in *Clybourne Park*, Fighting Prawn in *Peter and the Starcatcher*, and Charlie Brown in *You're a Good Man Charlie Brown*. David and his wife, Aly, can be seen about town as the musical duo The Beverly Lovers.



### THE MAN

**(Scott Creighton)** Edward Tulane marks Scott's 14th main stage appearance with the Fools. Roles include: Russ, *Clybourne Park*; Beverly Weston, *August, Osage County*; Smee, *Peter and the Starcatcher*; Marc,

*Art*; George, *Who's Afraid of Virginia Woolf*; Ben Hecht, *Moonlight and Magnolias*; H.C. Curry, *110 in the Shade*; Selsdon Mobrai, *Noises Off*; The Preacher, *Violet*; Henry Potter, *It's a Wonderful Life*; Schultz, *Circle Mirror Transformation*; Father in *The Velveteen Rabbit*; and The Old Actor in *Woman in Black*. Scott began his acting career in Seattle in 1976. He was invited to the valley in 1994 to play the title role in *The Nerd* and moved here permanently the next year.

## THE CREATIVE TEAM:

Direction ..... Natalie Battistone  
 Stage Management ..... K.O. Ogilvie\*  
 Scenic Design ..... Joe Lavigne  
 Lighting Design ..... Lynne M. Hartman\*\*

Costume Design ..... Darrin Pufall  
 Dialect Coach ..... Ann Price  
 Sound Engineers ..... Ted Macklin & Chris Henderson

Scenic Artist ..... K.O. Ogilvie  
 Production Assistant ..... Chris Henderson

### DARRIN J. PUFALL (Costume Design)

*Grey Gardens*, *Enchanted April*, *Shipwrecked!* (Company of Fools), *Hedwig and the Angry Inch*, *A Skull in Connemara* (Boise Contemporary Theatre), *Gypsy* (Broadway Rose, Portland, OR), *Noises Off* (The Idaho Shakespeare Festival), *The Monster Builder*, *The Cherry Orchard*, *Gracie and the Atom* (Artists Repertory Theatre), *Die Fledermaus*, *The Gondoliers*, *Yeomen of the Guard*, *The Mikado*, *A Little Night Music*, *The Pirates of Penzance* (Mock's Crest Productions, Portland OR). Mr. Pufall holds an MFA in Costume Design and Technology from The University of Florida and serves as an Associate Professor of Theatre Arts at Boise State University.

### LYNNE M. HARTMAN (Lighting Design)

is delighted to find herself back in Hailey among friends. Past designs for Company of Fools include *The Glass Menagerie* (1995) in Virginia and *Enchanted April* (2014) and *A Year With Frog and Toad* (2015) in Hailey. Lynne has designed lighting for plays, musicals & dance for more than 35 years for organizations such as Virginia Stage Company, Virginia Repertory

Theatre, TheatreVirginia, The Lost Colony, Richmond Ballet, McCarter Theatre, Porthouse Theatre, Virginia Shakespeare Festival, Dogwood Dell, Kings Dominion & Carowinds theme parks and Barksdale Theatre. Lynne resides in Norfolk, VA with husband David. Member: United Scenic Artists, Local 829.

**NATALIE BATTISTONE (Direction)** is an actor, director, teacher and theater artist, grateful to be making her debut with Company of Fools! Recent directing credits include: Kate Hamill's *Sense and Sensibility* (Royall Tyler Theatre at the University of Vermont), a site-specific adaptation of *Macbeth*, and *Hand to God* (The Spot). In January 2019 she will be directing Lauren Gunderson's new play, *The Revolutionists*, as part of The Spot's 4th season. Natalie hails from the East Coast where she earned her MFA in Acting from Harvard/American Repertory Theater and her BA in Classics and Theater from the University of Vermont. She has had two residencies at the Moscow Art Theatre School in Russia. She dedicates the work to this beautiful audience: "Someone will come for you, but first you must open your heart..." and sure enough, here you are.

**ANN PRICE (Dialect Coach)** is always thrilled to make the drive from Boise to work with Company of Fools! She has worked as voice and dialect coach for shows including *Grey Gardens*, *Vanya and Sonja* and *Masha and Spike*, *Shirley Valentine*, *Good People* and *Shipwrecked!* Ann has worked with Boise Contemporary Theater and the Idaho Shakespeare Festival on shows spanning more than 15 years. She directed the Boise State University production of *Crimes of the Heart*, *The Cure at Troy*, *The Misunderstanding* and *Metamorphoses*. Ann teaches voice and dialects in the Department of Theatre Arts at Boise State University.

**CHRIS HENDERSON (Production Assistant)** is also a Company Artist with Company of Fools. A graduate of Boise State's Theatre Arts Program, he appeared in the ensemble of Boise State's *Urintown: The Musical* and was assistant stage manager for Boise State's *Crimes of the Heart* and *This Is Our Youth*. Last year, Chris joined Company of Fools as a season apprentice and is now working full time as Production Assistant.

# IDAHO CONTENT STANDARDS

---

Reading Standards for Literature that apply to THE MIRACULOUS JOURNEY OF EDWARD TULANE, Company of Fools performance.

## KEY IDEAS & DETAILS:

Analyze how and why individuals, events, and ideas develop and interact over the course of a text.

**2nd Grade:** Describe how characters in a story respond to major events and challenges.

**4th Grade:** Describe in depth a character, setting, or event in a story or drama, drawing on specific details in the text (e.g., a character's thoughts, words, or actions).

**8th Grade:** Analyze how particular lines of dialogue or incidents in a story or drama propel the action, reveal aspects of a character, or provoke a decision.

## CRAFT & STRUCTURE:

Analyze the structure of texts, including how specific sentences, paragraphs, and larger portions of the text (e.g., a section, chapter, scene, or stanza) relate to each other and the whole.

**3rd Grade:** Refer to parts of stories, dramas, and poems when writing or speaking about a text, using terms such as chapter, scene, and stanza; describe how each successive part builds on earlier sections.

**8th Grade:** Analyze how differences in the points of view of the characters and the audience or reader (e.g., created through the use of dramatic irony) create effects such as suspense or humor.

## INTEGRATION OF KEY IDEAS:

Integrate and evaluate content presented in diverse media and formats, including visually and quantitatively, as well as in words.

**2nd Grade:** Compare and contrast two or more versions of the same story (e.g., Cinderella stories) by different authors or from different cultures.

**5th Grade:** Analyze how visual and multimedia elements contribute to the meaning, tone, or beauty of a text (e.g., graphic novel, multimedia presentation of fiction, folktale, myth, poem).

**6th Grade:** Analyze the extent to which a filmed or live production of a story or drama stays faithful to or departs from the text or script, evaluating the choices made by the director or actors.

### Materials for this study guide were gathered from these following sources:

[www.katedicamillo.com](http://www.katedicamillo.com)

[www.britannica.com/biography/Kate-DiCamillo](http://www.britannica.com/biography/Kate-DiCamillo)

[www.dramaticpublishing.com/authors/profile/view/url/dwayne-hartford](http://www.dramaticpublishing.com/authors/profile/view/url/dwayne-hartford)

[www.sde.idaho.gov/academic/shared/ela-literacy/booklets/ELA-Literacy-Standards.pdf](http://www.sde.idaho.gov/academic/shared/ela-literacy/booklets/ELA-Literacy-Standards.pdf)